



Rivier UNIVERSITY

M.Ed.

Master of Education in
Education Administration

Earn your degree in Education Administration

Advance academic excellence through
administrative leadership.

Prepare for Principal roles in elementary,
middle, and high schools and receive School
Principal Certification.

Rivier's M.Ed. in Education Administration leads to School Principal Certification by the New Hampshire Department of Education. As a principal, you'll manage day-to-day school operations, participate in curriculum development, interact with the community, parents, and students, and work to provide a school environment that supports academic success.

Available Facilities & Resources

Rivier University's Benoit Education Center is one of the finest facilities of its kind in northern New England. The Benoit Education Center houses the Cho Educational Resource Center, an extensive K-12 curriculum library. Rivier has become a statewide leader in preparing teachers to incorporate technology into their classrooms.

Choose Rivier

Rivier's M.Ed. programs provide real-world assignments and hands-on experience in the field to help you put theory into practice and develop your skills. Programs are based on the standards for certification identified by the New Hampshire and Massachusetts Departments of Education, and they also address the competencies identified as standards for school leaders by the Interstate Leaders Licensure Consortium. Courses are offered in 7-week or 14-week terms for added flexibility.



Course Format

On campus



Total Program Credits

39



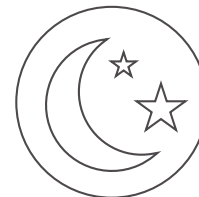
Cost Per Credit

\$620

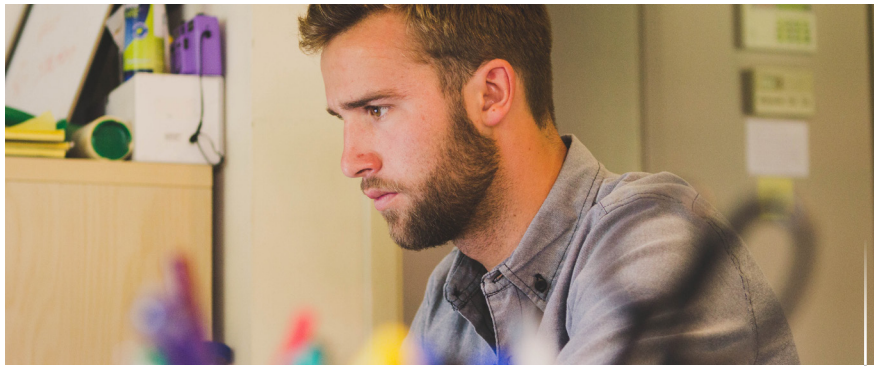


Estimated Program Length

2 years



Evening & Weekend Courses



M.Ed.

Program Start Dates

Three term starts per year allow you to begin your program in September, October, January, March, May, or July. Completed applications are reviewed as they are received throughout the year.

Course of Study

Required Courses

Foundation Courses

- ED 501 – Fundamentals of Research
- ED 540 – Curriculum Development
- ED 626 – Positive Psychology
- ED 720 – Social and Cultural Foundations

Administration Related Courses

- ED 542 – Leadership in School Administration
- ED 588 – Disability Law and Policy
- ED 605 – Professional Development and Evaluation
- ED 607 – Educational Finance
- ED 610 – Basic Human Interaction
- ED 613 – Collaboration and Intervention
- ED Elective

Internship/Seminar

- ED 646 – Internship/Seminar: School Principal

Certification

This degree program leads to School Principal certification by the New Hampshire State Department of Education (NH DOE) and is based on the standards for certification established by the NH DOE. In addition, the program incorporates the recommendations of the National Association of Secondary School Principals Assessment Center Project and addresses the competencies identified as Standards for School Leaders by Interstate Leaders Licensure Consortium.

Accreditation

Rivier University is accredited by the New England Commission of Higher Education, Inc. (NECHE).

How to Apply

1. **Apply online** at rivier.edu/apply. There is no application fee.
2. **Review and complete the application process** at rivier.edu/gradadmissions.
3. **Have questions?** For personal support, contact us at (603) 897-8507 or email admissions@rivier.edu.

7 & 14

Week course options

86

Years of Educational Excellence

23,000+

Strong alumni network

Quick Links

Ask a Question – admissions@rivier.edu

Meet with an Enrollment Advisor – rivier.edu/team

Attend a Graduate Info Session – events.rivier.edu

Tuition & Fees – rivier.edu/tuition

Facebook – facebook.com/rivieruniversity

Twitter – twitter.com/rivuniversity

Instagram – instagram.com/rivieruniversity

Apply Now – rivier.edu/apply